



ENTERPRISE CLASS  
WI-FI TO CELLULAR  
ROUTER



# DIGI TRANSPORT® WR44

Enterprise class, commercial grade Wi-Fi to cellular router with flexible interface options ideal for mobile and transportation applications

The Digi TransPort WR44 cellular router is an all-in-one mobile communications solution with true enterprise-class routing, security and firewall. This multifunction cellular router features a flexible design with integrated Wi-Fi access point, USB, serial and 4-port Ethernet switch, as well as a variety of configuration options including multiple serial ports (async or sync), GPS or I/O telemetry modules.

The Digi TransPort family offers an advanced routing, security and firewall feature set including stateful inspection firewall and integrated VPN. Enterprise-class protocols incorporate BGP, OSPF and VRRP+, a patented technology built upon the

popular VRRP failover standard providing true auto sensing, auto failure and auto recovery of any line drop.

Digi TransPort WR44 is ideal for transportation and mobile applications. Flexible power options include 11-58 VDC barrel or molex connectors for direct integration into vehicle applications. Digi Remote Manager<sup>SM</sup> provides easy setup, configuration and maintenance of large installations of Digi TransPort devices.

## BENEFITS

- Enterprise class cellular routers with advanced dynamic routing, security and firewall features
- High speed cellular interfaces: GSM GPRS/EDGE/ HSPA/CDMA EV-DO and 4G LTE
- Optional integrated 802.11 b/g/n; a/n Wi-Fi access point and 4-port Ethernet switch
- Flexible interfaces including DSL, serial (async/sync), GPS, USB and telemetry, with DC power options
- Powerful integrated end user programming
- Digi Remote Manager software for easy setup, configuration, and maintenance
- Available in industrial and commercial grade platforms

## RELATED PRODUCTS



Digi TransPort®  
WR11



Digi TransPort®  
WR21



Digi TransPort®  
WR44 R

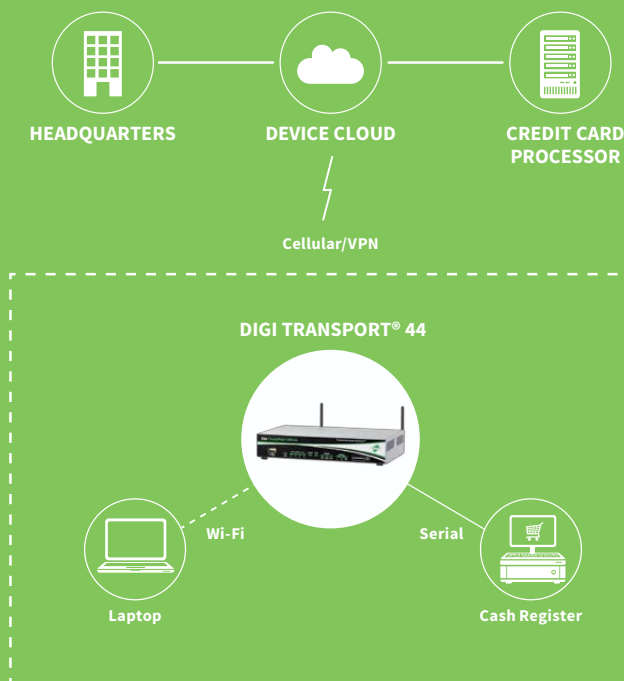


Accessories



Digi Remote  
Manager<sup>SM</sup>

## APPLICATION EXAMPLE



## SPECIFICATIONS

## Digi TransPort® WR44

## WIRELESS INTERFACES

## WWAN\*\*

LTE - EMEA (L1)	800/850/900/1800/1900/2100/2600 MHz; 3G fall back to 850/900/1900/2100MHz and 2G fall back to 850/900/1800/1900 MHz; Transfer rate (max): 50 Mbps Up, 100 Mbps Down
LTE - NORTH AMERICA (L5)	Multi-Carrier (Verizon, AT&T, and Sprint) 700/850/1700(AWS)/1900 MHz; 2G/3G GSM fall back to 850/900/1700AWS/1800/1900/2100 MHz; 2G/3G CDMA fall back to 800/1900 MHz; Transfer rate (max): 50 Mbps Up, 100 Mbps Down
LTE - NORTH AMERICA (L6)	700/850/1700(AWS)/1900 MHz; 2G/3G fall back to 850/1900 MHz; Transfer rate (max): 50 Mbps Up, 100 Mbps Down
LTE - VERIZON (L8)	700/1700(AWS) MHz; No 2G/3G fall back; Transfer rate (max): 50 Mbps Up, 100 Mbps Down
HSPA+ (U9)	850/900/1700 (AWS)/1900/2100 MHz; Transfer rate (max): 5.76 Mbps Up, 21 Mbps Down
GSM-R (R5)*	900/1800/1900 MHz (TRM-5); GPRS Class 10; Transfer rate (max): 42.8 Kbps Up, 85.6 Kbps Down
EDGE (E1)	GPRS/EDGE Class 10; 850/900/1800/1900 MHz; Transfer rate (max): 236 Kbps Up/Down
CDMA EV-DO (DX)*	450 MHz; EV-DO Rev B; R-UIM support; Transfer rate (max): 14.7 Mbps Up; 5.4 Mbps Down
CONNECTOR	Ux, Lx variants: 2 x 50 Ω SMA (Center pin: female); E1, Dx, Bx variants: 1 x 50 Ω SMA (Center pin: female)
SIM SLOTS	2, Mini-SIM (2FF)
SIM SECURITY	SIM slot cover plate optional

## WI-FI\*

STANDARD	802.11 b/g/n; a/n
MODES	Access point, Client and support for multiple SSID
TRANSMIT POWER	20 dBm + 1.0/-1.5 dBm
RECEIVE SENSITIVITY	54 Mbps / <-72 dBm and 11 Mbps / -90 dBm
SECURITY	Open or shared key authentication; WEP (64- and 128-bit) encryption; WPA/WPA2 with RADIUS (WPA Enterprise and pre-shared keys)
CONNECTORS	2 x 50 Ω RP-SMA (Center pin: male)

## GPS\*

CHANNELS	50
SENSITIVITY	-163 dB
PROTOCOL	NMEA 0183 V2.3 sentence output; +3.3 VDC active antenna drive; NMEA stream to local serial port or over TCP/IP
NAVIGATION	Galileo ready
AUGMENTATION	SBAS
COLD START	< 27 seconds TTFF (90%)
HORIZONTAL ACCURACY	< 2.5 meters (90%)
VELOCITY ACCURACY	0.1m/s
CONNECTOR	1 x 50 Ω SMA (Center pin: female)
ADDITIONAL FEATURES	Send GPS via UDP/IP, TCP/IP (up to two destinations) or serial; Customize and/or send data using Python; GPS status query; Time source capable

## WIRED INTERFACES

## SERIAL

PORTS	1; Expansion cards available to increase serial ports
STANDARD	RS-232; Expansion cards available in RS-422/485
ASYNC/SYNC	Async; Expansion cards available in sync
DTE/DCE	DCE
SIGNAL SUPPORT	TXD, RXD, RTS, CTS, DTR, DCD, DSR, RI
FLOW CONTROL	Software (XON/XOFF), Hardware supported

\* Optional hardware. Lead time and/or minimum order quantity may apply. Contact Digi Sales for details.

\*\* Transfer rates are network operator dependent

\*\*\* Reduced cellular performance may occur outside of -20° C to +60° C. Standard temperature power supplies may reduce temperature range.

\*\*\*\* The enclosure rating is self-declared and has not been formally verified by an independent lab.

## SPECIFICATIONS

## Digi TransPort® WR44

## WIRED INTERFACES

## SERIAL (CONTINUED)

COM PORT REDIRECTOR	RealPort®
CONNECTOR	DB-9 female

## ETHERNET

PORTS	4
STANDARD/PHYSICAL LAYER	IEEE 802.3; 10/100 Base-T
DATA RATE/MODE/INTERFACE	10/100 Mbit/s; Full or Half duplex; Auto MDI/MDIX
CONNECTOR	RJ-45

## I/O

DIGITAL I/O	Input 4 - 28 VDC / Output: 28 VDC 50 mA max
CONNECTOR	4-pin Molex (1 pin for input; 1 pin for I/O; the other 2 pins are used for DC power)

## USB

PORTS	1
STANDARD	USB 2.0
SIGNALING	Full- or low-speed
CONNECTOR	Type A

## DSL\*

TECHNOLOGY	VDSL2, ADSL2+, ADSL2, ADSL
STANDARD	Option of Annex A/M or B
CONNECTOR	RJ-11
PROTOCOL	RFC 2364 PPPoA, RFC 2516 PPPoE, RFC 2684 Bridged Ethernet, RFC 1483 Routed IP (all either LLC or VC-Mux); PPP and ATM PVC support

## OTHER

EXPANSION CARDS	Optional expansion cards available for GPS, fleet, telemetry (digital/analog I/O), ISDN/PSTN, serial and DialServ.
-----------------	--

## SOFTWARE

REMOTE MANAGEMENT	Digi Remote Manager <sup>SM</sup> (cloud based); SNMP v1/v2c/v3 (user installed/managed)
LOCAL MANAGEMENT	Web Interface (HTTP/HTTPS); CLI (Telnet, SSH, SMS, Serial port)
MANAGEMENT/ TROUBLESHOOTING TOOLS	FTP, SFTP, SCP, Protocol Analyzer with PCAP for Wireshark, Event Logging with Syslog and SMTP, NTP/SNTP
PROGRAMMING TOOLS/ ENVIRONMENTS	Python, DIA, Digi ESP <sup>TM</sup>
MEMORY	128 MB NAND Flash/64 MB DDR2 SDRAM

## POWER

INPUT	9 – 36 VDC
CONSUMPTION	15W max, 8.5W typical
CONNECTOR	Locking barrel and 4-pin terminal block (2 pins are used for power; the other 2 pins are used for I/O).
DC POWER CORD*	Locking barrel to bare wire or 4-pin connector to bare wire
DC POWER SUPPLY*	100-240 VAC 50/60 Hz; Option of standard temperature or extended temperature
BATTERY BACKUP	None

\* Optional hardware. Lead time and/or minimum order quantity may apply. Contact Digi Sales for details.

\*\* Transfer rates are network operator dependent

\*\*\* Reduced cellular performance may occur outside of -20° C to +60° C. Standard temperature power supplies may reduce temperature range.

\*\*\*\* The enclosure rating is self-declared and has not been formally verified by an independent lab.

SPECIFICATIONS		Digi TransPort® WR44	
POWER			
DIMENSIONS (L X W X H)		WR44: (non-DSL variants): 5.7 in x 8.3 in x 1.6 in (145 mm x 210 mm x 40 mm) WR44: (DSL variants): 5.7 in x 10.4 in x 1.6 in (145 mm x 264 mm x 40 mm)	
WEIGHT		WR44: (non-DSL variants): 1.98 lb (0.9 kg) WR44: (DSL variants): 2.25 lbs (1 kg)	
STATUS LEDS		Power, LAN, Wi-Fi, Serial/DSL, WWAN (Link, Act, SIM), Signal strength	
MATERIAL/RATING****		Industrial (Metal)/ IP30	
MOUNTING		Brackets for wall mount & DIN rail sold separately	
ENVIRONMENTAL			
OPERATING TEMPERATURE ***‡		Standard temp variants: 0° C to +40° C; Extended temp optional (-40° C to +60° C (non-Wi-Fi variants); -20° C to +60° C (Wi-Fi variants))	
STORAGE TEMPERATURE		-40° C to +85° C	
RELATIVE HUMIDITY		0% to 95% (non-condensing) @ 25° C	
ETHERNET ISOLATION		1.5 kV RMS	
SERIAL PORT PROTECTION (ESD)		15 kV	
HAZARDOUS (CLASS 1 DIV 2)		N/A	
CONFORMAL COATING		N/A	
APPROVALS			
GSM/UMTS		PTCRB, NAPRD.03, GCF-CC, R&TTE, EN 301 511	
CDMA/EV-DO		CDG TIA/EIA-690, CDG TIA/EIA-98-E	
CELLULAR CARRIERS		Certified by most major carriers.	
SAFETY		UL 60950, CSA 22.2 No. 60950, EN60950	
EMISSIONS/IMMUNITY		CE, FCC Part 15 Class B, AS/NZS CISPR 22, EN55024, EN55022 Class B (WR44 models with VDSL are Class A)	
INDUSTRY		E-Marking (72/245/EEC, 2009/19/EC); Automotive Non-Immunity (2004/104/ EC, 2005/49/EC, 2005/83/EC, 2006/28/EC); (Specification for environmental tests for ground vehicle installations - covers temperature, humidity, vibration and shock)	
WARRANTY			
PRODUCT WARRANTY		5 years	

ENTERPRISE SOFTWARE	DESCRIPTION
PROTOCOLS	HTTP, HTTPS, FTP, SFTP, SSL, SMTP, SNMP (v1/v2c/v3), SSH, Telnet and CLI for web management; remote management via Digi Remote Manager; SMS management, protocol analyzer, ability to capture PCAP for use with Wireshark; DynDNS; Dynamic DNS client compatible with BIND9/No-IP/DynDNS
SECURITY/VPN	Stateful inspection firewall with scripting, address and port translation; VPN: IPSec with IKEv1, IKEv2, NAT Traversal; SSL, SSLv2, FIPS 197, Open VPN client and server; PPTP, L2TP; VPN Tunnels included: 20 (DSL variants), 5 (non-DSL variants); Maximum VPN Tunnels available: 200; Cryptology: SHA-1, MD5, RSA; Encryption: DES, 3DES and AES up to 256-bit; Authentication: RADIUS, TACACS+, SCEP for X.509 certificates; Content Filtering (via 3rd party) ; MAC Address Filtering; VLAN support; Ethernet Port Isolation
ROUTING/FAILOVER	IP pass-through ; NAT, NAPT with IP Port Forwarding; Ethernet Bridging; GRE; Multicast Routing; Routing Protocols: PPP, PPPoE, RIP (v1, v2) OSPF, SRI, BGP, iGMP routing (multicast); IPv6 (firmware upgradable); RSTP (Rapid Spanning Tree Protocol); IP Failover: VRRP, VRRP+TM; Automatic failover/failback to second GSM network/Standby APN
OTHER PROTOCOLS	DHCP; Dynamic DNS client compatible with BIND9/No-IP/DynDNS; QoS via TOS/DSCP/WRED
SPECIALTY/LEGACY PROTOCOLS	RealPort®; Modbus UDP/TCP to serial; X.25 including XOT, SNA/IP, TPAD and PAD; Protocol switch*

\* Optional hardware. Lead time and/or minimum order quantity may apply. Contact Digi Sales for details.

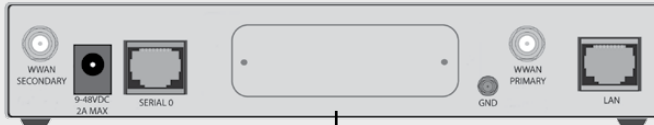
\*\* Transfer rates are network operator dependent

\*\*\* Reduced cellular performance may occur outside of -20° C to +60° C. Standard temperature power supplies may reduce temperature range.

\*\*\*\*The enclosure rating is self-declared and has not been formally verified by an independent lab.

## SPECIFICATIONS

## Connector | Specification



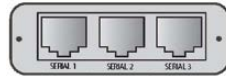
### SYNC/ASYNC SERIAL PORT (S1)\*



1 x DB-25

X.21/RS-422/RS-232 synchronous/asynchronous serial port

### ASYNC SERIAL PORTS (A3)



3 x RJ-45

3x asynchronous RS-232 serial ports

### PSTN (P1)\*



1 x RJ-45

PSTN interface that can be used to dial out and receive calls. A PPP session is created over which IP traffic can be sent and received.

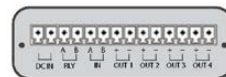
### ISDN (I1)\*



1 x RJ-45

ISDN Basic Rate Interface (BRI) which can be configured either as a TE (terminal endpoint) or as NT-1 (network termination). The option also includes an additional asynchronous serial port via a second RJ-45 port.

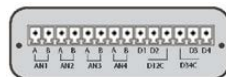
### TELEMETRY 1 (T1)\*



1 x 14-pin terminal block

4 x Opto-isolated digital output ports and 1 x Opto-isolated digital input port. It also provides a relay I/O port, voltage monitoring port, and internal temperature monitoring. Fully programmable via Python for embedded Digi TransPort applications.

### TELEMETRY 2 (T2)\*



1 x 14-pin terminal block

4 x Analog and 4 x Digital I/O ports fully programmable via Python for embedded Digi TransPort applications.

### GPS (G1)\*

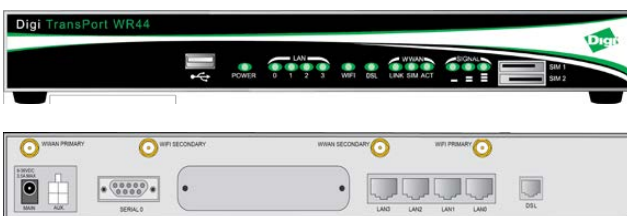


1x SMA

Fully-integrated GPS tracking. See main specifications area for details.

## PRODUCT IMAGES

### DIGI TRANSPORT WR44 (DSL VARIANT)

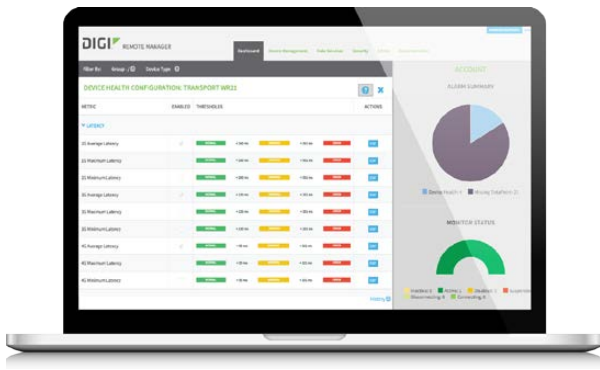


### DIGI TRANSPORT WR44



\* Optional hardware. Lead time and/or minimum order quantity may apply. Contact Digi Sales for details.

# DIGI REMOTE MANAGER<sup>SM</sup>



## INFRASTRUCTURE

- Hosted in multiple commercial-grade SAS 70 certified facilities in North America and Europe
- Superior availability, operating to 99.9% or greater
- Open APIs available to support application development

## CAPABILITIES

- Centralized management of remote devices over 3G/4G LTE
- Define standard configurations and automatically monitor individual devices for PCI security compliance
- Report and alert on performance statistics, including connection history, signal quality, latency, data usage and packet loss
- No servers or applications to operate and maintain
- Complete tasks for your entire device network in minutes
- Edit configurations and update firmware for your individual devices or groups
- Monitor the status and location of your remote device via a web browser
- Active or deactivate cellular lines and monitor data to ensure you never incur overage charges

## SECURITY

- Certified SSAE-16 and ISO27001 facilities
- Member of the Cloud Security Alliance
- Over 175 Security Controls in place to protect your data
- Enables compliance with security frameworks like PCI, HIPAA, NIST and more
- Earned SkyHigh's Cloud Trust Program highest ranking of Enterprise-Ready

PART NUMBERS	DESCRIPTION
WR44-E100-CE1-SW	Digi TransPort WR44 - Cellular (GSM EDGE), No Wi-Fi, Antennas & Power Supply included
WR44-E100-NE1-SW	Digi TransPort WR44 - Cellular (GSM EDGE), Wi-Fi, Antennas & Power Supply included
WR44-E1A3-CE1-SW	Digi TransPort WR44 - Cellular (GSM EDGE), No Wi-Fi, Async (3 RS-232 Ports), Antennas & Power Supply included
WR44-L100-CE1-SW	Digi TransPort WR44 - Cellular (4G LTE International), No Wi-Fi, Antennas & Power Supply included (International)
WR44-L100-NE1-SW	Digi TransPort WR44 - Cellular (4G LTE International), Wi-Fi, Antennas & Power Supply included (International)
WR44-L100-FE2-SW	Digi TransPort WR44 - Cellular (4G LTE International), No Wi-Fi, VDSL (Annex A/M), Antennas & Power Supply included (International)
WR44-L1A3-CE1-SW	Digi TransPort WR44 - Cellular (4G LTE International), No Wi-Fi, Async (3 RS-232 Ports), Antennas & Power Supply included (International)
WR44-L500-CE1-SU	Digi TransPort WR44 - Cellular (4G LTE Multi-Carrier Software Defined, North America), No Wi-Fi, Antennas & Power Supply included
WR44-L500-NE1-SU	Digi TransPort WR44 - Cellular (4G LTE Multi-Carrier Software Defined, North America), Wi-Fi, Antennas & Power Supply included
WR44-L5A3-CE1-SU	Digi TransPort WR44 - Cellular (4G LTE Multi-Carrier Software Defined, North America), No Wi-Fi, Async (3 RS-232 Ports), Antennas & Power Supply included
WR44-L600-CE1-SU	Digi TransPort WR44 - Cellular (4G LTE North America (AT&T and GSM Carriers)), No Wi-Fi, Antennas & Power Supply included
WR44-L600-NE1-SU	Digi TransPort WR44 - Cellular (4G LTE North America (AT&T and GSM Carriers)), Wi-Fi, Antennas & Power Supply included
WR44-L6A3-CE1-SU	Digi TransPort WR44 - Cellular (4G LTE North America (AT&T and GSM Carriers)), No Wi-Fi, Async (3 RS-232 Ports), Antennas & Power Supply included
WR44-L800-CE1-SU	Digi TransPort WR44 - Cellular (4G LTE Verizon), No Wi-Fi, Antennas & Power Supply included
WR44-L800-NE1-SU	Digi TransPort WR44 - Cellular (4G LTE Verizon), Wi-Fi, Antennas & Power Supply included
WR44-L8A3-CE1-SU	Digi TransPort WR44 - Cellular (4G LTE Verizon), No Wi-Fi, Async (3 RS-232 Ports), Antennas & Power Supply included
WR44-U900-CE1-SW	Digi TransPort WR44 - Cellular (HSPA+ Global), No Wi-Fi, Antennas & Power Supply included (International)
WR44-U900-NE1-SW	Digi TransPort WR44 - Cellular (HSPA+ Global), Wi-Fi, Antennas & Power Supply included (International)
WR44-U9A3-CE1-SW	Digi TransPort WR44 - Cellular (HSPA+ Global), No Wi-Fi, Async (3 RS-232 Ports), Antennas & Power Supply included (International)
WR44-U900-FE2-SW	Digi TransPort WR44 - Cellular (HSPA+ Global), No Wi-Fi, VDSL (Annex A/M), Antennas & Power Supply included (International)
WR44-0000-FE2-SW	Digi TransPort WR44 - No Cellular, No WiFi, VDSL (Annex A/M), Power Supply included

**DIGI SERVICE AND SUPPORT** / You can purchase with confidence knowing that Digi is always available to serve you with expert technical support and our industry leading warranty. For detailed information visit [www.digi.com/support](http://www.digi.com/support).

© 1996-2016 Digi International Inc. All rights reserved.  
All trademarks are the property of their respective owners.

91001557  
E3/216

**DIGI INTERNATIONAL WORLDWIDE HQ**  
877-912-3444 / 952-912-3444 / [www.digi.com](http://www.digi.com)

**DIGI INTERNATIONAL FRANCE**  
+33-1-55-61-98-98 / [www.digi.fr](http://www.digi.fr)

**DIGI INTERNATIONAL JAPAN**  
+81-3-5428-0261 / [www.digi-intl.co.jp](http://www.digi-intl.co.jp)

**DIGI INTERNATIONAL SINGAPORE**  
+65-6213-5380

**DIGI INTERNATIONAL CHINA**  
+86-21-50492199 / [www.digi.com.cn](http://www.digi.com.cn)

