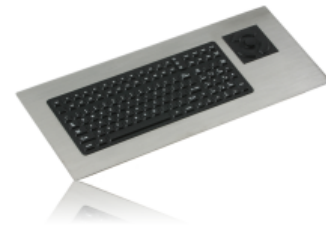


# PM-2000

## Panel Mount Keyboard with HulaPoint II™

The PM-2000 is constructed using a highly rugged stainless steel case and industrial silicone rubber pad, ensuring NEMA 4X protection in extremely rugged applications. An integrated HulaPoint II™ pointing device offers additional usability. The PM-2000 provides users with a full 114-key industrial keyboard and HulaPoint II™ industrial pointing device. It has two rows of function keys that allow for single keystroke access to software shortcuts.



### Technical Specifications

Certifications	NEMA 4X, CE UL60950, FCC Part 15 Class B
Shock	3x11 ms pulses of 50g on each of 3 axes
Cable	LENGTH: 10 feet (3 meters) DESIGN: "Y" PS/2 or AT/serial Cable (providing separate keyboard and mouse connections), or Single-Cable USB
Key Switch	MATERIAL: Industrial Silicone Rubber LIFE: Greater than 10 Million Cycles TRAVEL: 0.055 in. (1.4mm) ACTUATION FORCE: 7.03 oz. +/- 1.06 oz. (200g +/- 30g) FEEDBACK: Tactile with Mechanical Snap
Vibration	POWER SPECTRAL DENSITY: 0.04g/Hz FREQUENCY RANGE: 20Hz - 2 kHz DURATION OF TEST PER AXIS: 3 hours
Power	PS/2 or AT/serial: KEYBOARD: 50mA@5V (from Keyboard port), POINTER: 35mA@5V (from Mouse port); USB: 85mA@5V (from CPU port)
Flammability	PRINTED CIRCUIT BOARD: 94 VO SILICONE OVERLAY: 94 HB INTERFACE CABLE: 94 VO
Compatability	PS/2 KEYBOARD/HULAPOINT: All Windows Operating Systems USB KEYBOARD/HULAPOINT: All Windows and Macintosh OS
Temperature Range	STORAGE: -40C to +70C (-40F to +158F) OPERATING: -20C to +60C (-4F to +140F)
Weight	5.50 lbs +/- 0.10 lbs (2.49 kg +/- 0.05 kg)
Warranty	1 year limited warranty
Humidity	100% (when properly installed)
Dimensions	21.80" x 9.20" x 0.28" (w-h-d) 553.7mm x 233.7mm x 7.1mm SCREWS: 1.58" (40.1mm)
Model Numbers	

### Features and Benefits

- 10-Key Numeric Pad
- 24 Function Keys
- Integrated HulaPoint II Pointing Device
- USB, PS/2 and AT/serial configurations available