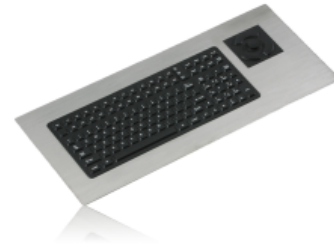


PM-2000-IS

Intrinsically Safe Panel Mount Keyboard with HulaPoint II™

iKey manufactures devices to reduce risk of failure in your hazardous areas. The intrinsically safe PM-2000-IS is constructed using a highly rugged stainless steel case and industrial silicone rubber pad, ensuring NEMA 4X protection in extremely rugged applications. An integrated HulaPoint II™ pointing device offers a dditional usability. The PM-2000-IS has a Factory Mutual approval for Class I, II and III, Division I, Groups C, D, E, F and G. The unit includes optical isolated barriers and bulkhead cables for complete protection in hazardous locations. The PM-2000-IS provides users with a full 114-key industrial keyboard and has two rows of function keys that allow for single keystroke access to software shortcuts.



Technical Specifications

Certifications	NEMA 4X, CE UL60950, FCC Part 15 Class B Factory Mutual Class I, II, & III, Division I, Groups C, D, E, F, & G
Shock	3x11 ms pulses of 50g on each of 3 axes
Cable	LENGTH: 5 feet from keyboard to Bulkhead Connector DESIGN: 2 separate cables (providing separate keyboard and mouse connections)
Key Switch	MATERIAL: Industrial Silicone Rubber LIFE: Greater than 10 Million Cycles TRAVEL: 0.055 in. (1.4mm) ACTUATION FORCE: 7.03 oz. +/- 1.06 oz. (200g +/- 30g) FEEDBACK: Tactile with Mechanical Snap
Vibration	POWER SPECTRAL DENSITY: 0.04g/Hz FREQUENCY RANGE: 20Hz - 2 kHz DURATION OF TEST PER AXIS: 3 hours
Flammability	PRINTED CIRCUIT BOARD: 94 VO SILICONE OVERLAY: 94 HB INTERFACE CABLE: 94 VO
Compatability	PS/2 KEYBOARD/HULAPOINT: All Windows Operating Systems
Temperature Range	STORAGE: -40C to +70C (-40F to +158F) OPERATING: -20C to +60C (-4F to +140F)
Weight	6.00 lbs +/- 2.72 lbs (1.70 kg +/- 0.05 kg)
Warranty	1 year limited warranty
Humidity	100% (when properly installed)
Dimensions	21.80" x 9.20" x 0.28" (w-h-d) 553.7mm x 233.7mm x 7.1mm SCREWS: 1.58" (40.1)
Model Numbers	

Features and Benefits

- 10-Key Numeric Pad
- 24 Function Keys
- Integrated HulaPoint II Pointing Device
- PS/2 configurations available