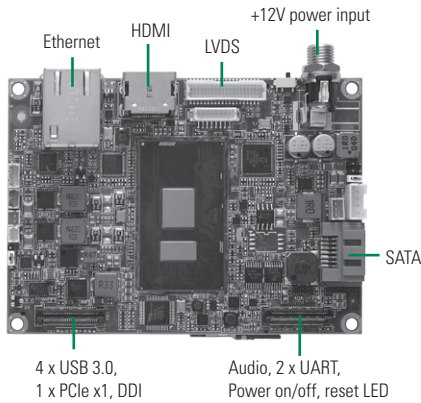


PICO500

6th Generation Intel® Core™ i7/i5/i3 and Celeron® Processor Pico-ITX SBC with HDMI/LVDS, 1 GE & Audio

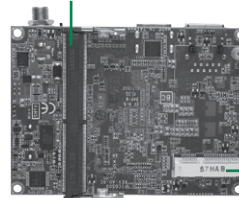
NEW



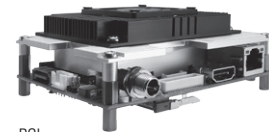
Features

- 6th Generation Intel® Core™ i7/i5/i3 & Celeron® processor
- 1 DDR4 SO-DIMM supports up to 16 GB memory capacity
- 1 USB 2.0 and 1 Gigabit LAN ports
- Intel® AMT 11 supported

DDR4 SO-DIMM



▲ Rear view



Full-Size PCI Express Mini Card w/mSATA supported

System

CPU	6th Generation Intel® i7/i5/i3 & Celeron® processor onboard
System Memory	1 x 260-pin DDR4-2133 SO-DIMM max. up to 16 GB
Chipset	N/A
BIOS	AMI
SSD	N/A
Watchdog Timer	255 levels, 1~255 sec.
Expansion Interface	1 x Full-Size Mini PCI Express Mini Card with mSATA supported 1 x PCIe x1, 2 x UART, 1 x DDI, 4 x USB 3.0, and 1 x HD audio (through expansion connector)
Battery Lithium	Lithium 3V/220mAh
Power Input	DC power jack connector +12V DC-in only AT Auto Power On function supported
Power Requirements	TBD
Size	100 x 72 mm
Board Thickness	1.6 mm
Temperature	-20°C ~ +70°C (-4°F ~ 158°F), operation
Relative Humidity	10% ~ 95% relative humidity, non-condensing

I/O

MIO	N/A
SATA	1 x SATA-600
Hardware Monitoring	Detect CPU/system temperature and voltage
Ethernet	1 port 10/100/1000 Mbps supports Wake-on-LAN, PXE Boot ROM with Intel® i219LM
Audio	HD Codec audio as MIC-in/Line-out with Realtek ALC662
USB	1 x USB 2.0
SMBus	System Management Bus for advanced monitoring/control
Digital I/O	N/A

Display

Chipset	Intel® HD Graphics
Memory Size	Share System memory
Display Interface	1 x LVDS; 18/24-bit single/dual channel 1 x HDMI

Packing List

Standard

Quick installation guide, User's Manual/Utility CD and accessories

Accessories

Part Number	Description	Qty
	SATA cable	1
	SATA power cable	1
	Heatspreader	1
	Cooler	1

Ordering Information

Standard

PICO500HGA-i7-6600U	6th Generation Intel® Core™ i7-6600U (2.6-3.4GHz, 4MB cache, 15W) pico-ITX SBC with HDMI/LVDS, 10/100/1000Mbps, 1 USB
PICO500HGA-i3-6100U	6th Generation Intel® Core™ i3-6100U (2.3GHz, 3MB cache, 15W) pico-ITX SBC with HDMI/LVDS, 10/100/1000Mbps, 1 USB

Optional

AX93275 (P/N:E393275100)	I/O board for 1 x RS-232/422/485, 1 x RS-232, 4 x USB 3.0, 1 x VGA, 1 x Audio
AX93276 (P/N:E393276100)	I/O board for 1 x RS-232/422/485, 1 x RS-232, 4 x USB 3.0, 1 x HDMI, 1 x Gigabit LAN