

# MH-T01x Series Industrial Rugged Tablet

A robust, high-performing, and versatile solution for industrial environments requiring reliability, adaptability, and precision

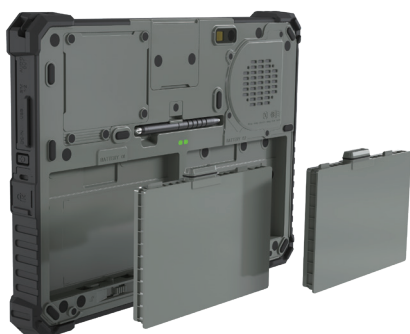


## ■ High-Performance Intel Processors

Equipped with [Intel 11th Gen. Processors](#) (MH-T01T) and [Intel N-Series Processors](#) (MH-T01A), offering powerful multitasking capabilities and seamless performance for demanding industrial applications.

## ■ Superior Display for Indoor and Outdoor Use

The 10.1" touch display features a [1000 nits sunlight-readable LCD](#) (MH-T01T), ensuring excellent visibility even in bright outdoor conditions. [OCA bonding technology](#) and [Corning Gorilla Glass](#) offer exceptional clarity and enhanced screen durability.



## ■ Extended Battery Life

[Dual hot-swappable batteries](#) deliver up to [8 hours of operation](#) on the MH-T01T and an extended [10 hours](#) on the MH-T01A, ensuring long-lasting and uninterrupted use.





## Built for Extreme Environments

**IP65-rated** for complete protection against dust and water. Engineered to **MIL-STD-810H** standards with drop resistance up to **1.5m** (MH-T01T) and **1.8m** (MH-T01A), offering rugged durability in challenging conditions.

## Reliable Connectivity

**Dual SIM card slots** ensure stable and consistent network connections for mission-critical operations.

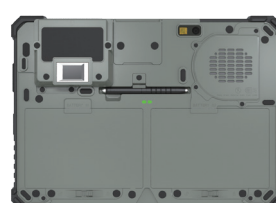


## Flexible Cradle Solutions

Optional **desktop** and **vehicle cradles** provide secure, convenient, and efficient transitions between mobile and stationary workflows.

## Customizable and Expandable Functionalities

Modular expansion slots support a wide range of optional peripherals, including **barcode scanner**, **smart card reader**, **fingerprint reader**, **3D camera**, additional **USB/COM/LAN ports**, or **MicroSD slot**, providing tailored and scalable solutions.



# Industrial Tablet

## Rugged Tablet

NEW



| Model                        |                           | MH-T01A  | MH-T01T   |
|------------------------------|---------------------------|--|---|
| DISPLAY                      | Size                      | 10.1" IPS  |   |
|                              | Resolution                | 1920 x 1200  |   |
|                              | Brightness                | 450 nits   | 1000 nits   |
|                              | Lifetime                  | 30,000 hours   |   |
|                              | Touchscreen               | Corning Gorilla Glass and Anti-Fingerprint P-CAP Multi-Touch (i)<br>OCA Bonding with WUXGA LCD |   |
| O.S. Support                 |                           | Windows 11 IoT GAC 24H2  | Windows 11 IoT GAC / Windows 10 IoT LTSC                        |
| CPU Support                  |                           | Intel® Alder-Lake N50/N200   | Intel® 11th Gen. Core™ i7/i5/i3/Celeron® Processor, Max. 4.4GHz |
| Memory                       |                           | LPDDR5 8GB (max. 16GB)   | DDR4 8GB (max. 32GB)  |
| Storage                      |                           | 1 x 256GB M.2 NVMe SSD (max. 1TB)  |   |
| Audio (Speaker / Microphone) |                           | 1 x 2W Speaker / 1 x Microphone  |   |
| WiFi + Bluetooth             |                           | WiFi 6E + Bluetooth 5.3  |   |
| Battery Capacity             |                           | 10.8V / 4600mAh / 49.6Wh (dual-main battery for hot-swap)                                      |   |
| Battery Operation            |                           | 10 hours   | 8 hours   |
| BIOS                         |                           | AMI  |   |
| G-Sensor + Gyroscope         |                           | 1  |   |
| Ambient Light Sensor         |                           | 1  |   |
| Vibrator                     |                           | 1  |   |
| Button                       |                           | 6 (ii)   |   |
| Security                     |                           | TPM 2.0 / Kensington Lock  |   |
| Fanless / Fan                |                           | Fanless  | Fan   |
| I/O PORTS                    | USB                       | 1 x USB Type C (for fast charging / data transmission / display)<br>2 x USB 3.0 Type A (iii)   |   |
|                              | DC Jack                   | 1  |   |
|                              | Phone Jack                | 1  |   |
|                              | SD / SIM                  | 1 (Expansion Slot 1) / 1   |   |
|                              | Cradle Connector          | 1 x POGO Pin (for charging / external antenna)   |   |
|                              | Expansion Slot            | 2  |   |
|                              | LAN / COM / HDMI®         | 1 / 1 (Expansion Slot 1) / --  |   |
| OPTIONS                      | Barcode Scanner           | 2D Barcode (Expansion Slot 1)  |   |
|                              | FF Front / AF Rear Camera | 2MP (optional Windows Hello) / 8MP with Flashlight   |   |
|                              | 3D Camera                 | 1 (either)   |   |
|                              | NFC / RFID                |  |   |
|                              | MSR / Card Reader         | 1 (either, Expansion Slot 1)   |   |
|                              | Payment Card Reader       |  |   |
|                              | 4G/5G + GPS               | 4G/5G Module with GNSS   |   |
|                              | Fingerprint Reader        | 1 (Expansion Slot 2)   |   |
| Cradle                       |                           | Desktop Cradle / Vehicle Cradle  |   |
| Battery Charger              |                           | 2 Bays   |   |
| Strap                        |                           | Hand Strap / Shoulder Strap  |   |
| IP Rating                    |                           | IP65   |   |
| Drop Test                    |                           | 1.8m (MIL-STD-810H)  | 1.5m (MIL-STD-810H)   |
| Operating Temperature        |                           | -10°C~50°C   | -10°C~50°C (Battery Mode) and -20°C~60°C (AC Mode)              |
| Power Adaptor                |                           | 19V / 3.42V / 65W for tablet   |   |
| Dimensions (W x H x D)       |                           | 274 x 195 x 25.5mm<br>283 x 203 x 27.5mm (with rubber corner)                                  |   |
| Weight                       |                           | 1.08kg (tablet only)   | 1.28kg (tablet only)  |
| Certification                |                           | CE, FCC, PSE, TELEC  |   |

(i) Supporting Finger / Stylus / Raindrop / Glove

(ii) 1 x Power Button, 1 x Home Key, 2 x Function Key, 1 x Volume+, 1 x Volume-

(iii) One on board and another one on Expansion Slot



## ► MH-T01A & MH-T01T Accessories

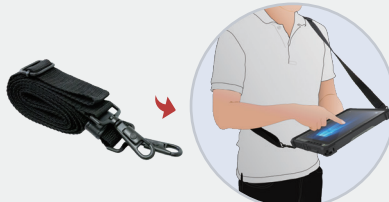


### Hand Strap



- 360° rotatable
- Easy stand mode
- Dimensions: 253 x 190mm

### Shoulder Strap



- 1 x movable cable tie
- Dimensions: 1950 x 320mm

### Battery Charger



- Input: DC In 19V
- 2 x battery bays
- Bi-color LED indicators

### Desktop Cradle

#### Charger Only, No I/O Function



- Output: 2 x pogo pin (3A, GND)
- Input: 1 x DC In 19V
- Security lock slot:  
1 x Kensington lock  
1 x Metal lock (optional)
- Dimensions: 190.8 x 157.5 x 257.3mm

#### Full I/O Function

- Output: 2 x pogo pin (3A, GND)
- Input: 1 x DC In 19V
- 4 x USB 2.0 Type A
- 1 x COM (DB9) (with 12V/5V/RI)
- 1 x RJ45 (10/100/1000Mbps)
- 1 x HDMI®
- 1 x logo LED indicator
- Security lock slot:  
1 x Kensington lock  
1 x Metal lock (optional)
- Dimensions: 157.5 x 190.8 x 257.3mm

### Battery Pack



- Battery type: Li-ion
- Voltage: 10.8V
- Capacity:  
Typical 2400mAh  
Min. 2100mAh
- Number of cells: 3S1P
- Dimensions:  
119.5 x 79.2 x 9.5mm
- Weight: 150g

### Vehicle Cradle



- Output: 2 x pogo pin (3A, GND)
- Input: 1 x 9~48V terminal block  
(3 pin  $\phi = 2.5\text{mm}$ ) (with ignition function)
- Security lock slot:  
1 x Kensington lock  
1 x Metal lock (optional)
- Dimensions: 310.5 x 100.6 x 262mm
- VESA: 75 x 75mm
- 4 x USB 2.0 Type A
- 1 x COM (DB9) (with 12V/5V/RI)
- 1 x RJ45 (10/100/1000Mbps)
- 1 x HDMI®
- 1 x logo LED indicator

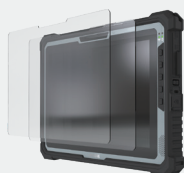
### Stylus



- Dimensions: 90mm;  $\varnothing 7\text{mm}$
- Tip size:  $\varnothing 2.5\text{mm} + \varnothing 5\text{mm}$
- Spring extension cable length: 100mm

### Screen Protector

#### AF & AG/AF & AR/AF & Anti-UV/AF Tempered Glass Screen Protector



- Dimensions: 238.3 x 162 x 0.45mm
- Hardness: 9H

### Power Adapter



- Output: 19V, 3.42A, 65W
- Input: 100V-240V, 50-60Hz, 2.0A
- Dimensions: 105.5 x 46.4 x 28.3mm
- Weight: 300g
- Output cable length: 1200mm
- Input cable length: 1830mm

### Vehicle Power Cable



- Cigarette lighter connector:  
1 x 12V/10A with fuse  
1 x LED indicator
- 1 x terminal block (3 pin  $\phi = 2.5\text{mm}$ )
- Cable length: 2000mm



Fieldworks Direct BV  
Veemarktkade 8  
NL-5222 AE 's-Hertogenbosch

e-mail: [info@fieldworks.nl](mailto:info@fieldworks.nl)  
tel. +31(0) 73 624 1111  
fax +31(0) 73 624 1112

[www.fieldworks.nl](http://www.fieldworks.nl)