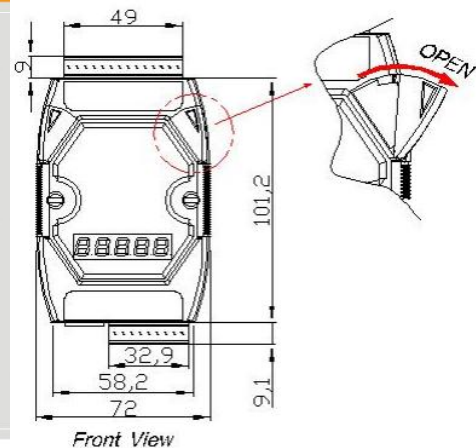


Remote Maintenance with serial streaming Solution



M2M-710D



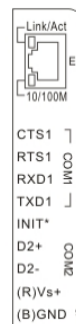
Front View

Dimensions

The M2M-710D module is specially designed for the remote maintenance and upgrading the serial to network application solution. It is suitable for the harsh industrial field. M2M-710D provides 2 major technologies on networking. The Pair connection provides TCP data tunneling between 2 serial devices. M2M-710D also Support VxComm functions that the maintenance man can take the remote maintenance or monitor whenever the time is and whatever the place is.

Features

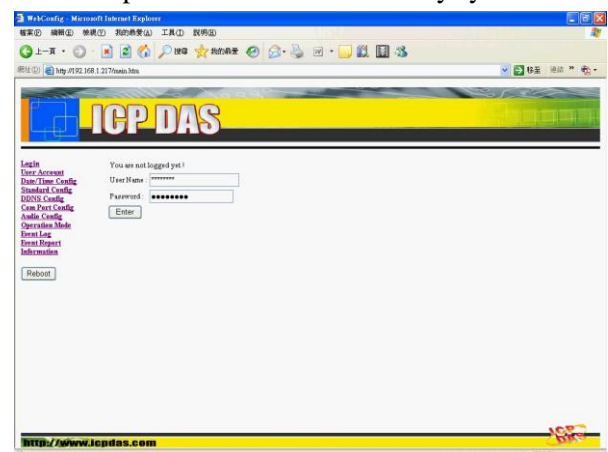
- Provide pair connection (RS-232, RS-485) on network
- Web-based administration
- Support VxComm
- Accommodating with M-4132
- MiniOS 7
- Ethernet Protocol: TCP, UDP, IP, ICMP, AR
- Provide dynamic DNS function
- Built-in web server
- Built-in self-tuner ASIC chip for RS-485 port
- Quick start
- 5-Digit 7 Segment LED Display
- EMI, RoHS compliance
- Supply static IP/DHCP
- Supply DDNS(Dynamic DNS)



| Pin | Name | Description |
|-----|-------|---------------------|
| 1 | CTS1 | Clear to Send |
| 2 | RTS1 | Request to Send |
| 3 | RxD1 | Receive Data |
| 4 | TxD1 | Transmit Data |
| 5 | INIT | Init Pin |
| 6 | DATA+ | Data+ of RS-485 |
| 7 | DATA- | Data- of RS-485 |
| 8 | Vs | Vs of Power Supply |
| 9 | GND | GND of Power Supply |

Web-based administration

- The M2M-710D module built-in web server, the user can operate and set the module easily by web browser.



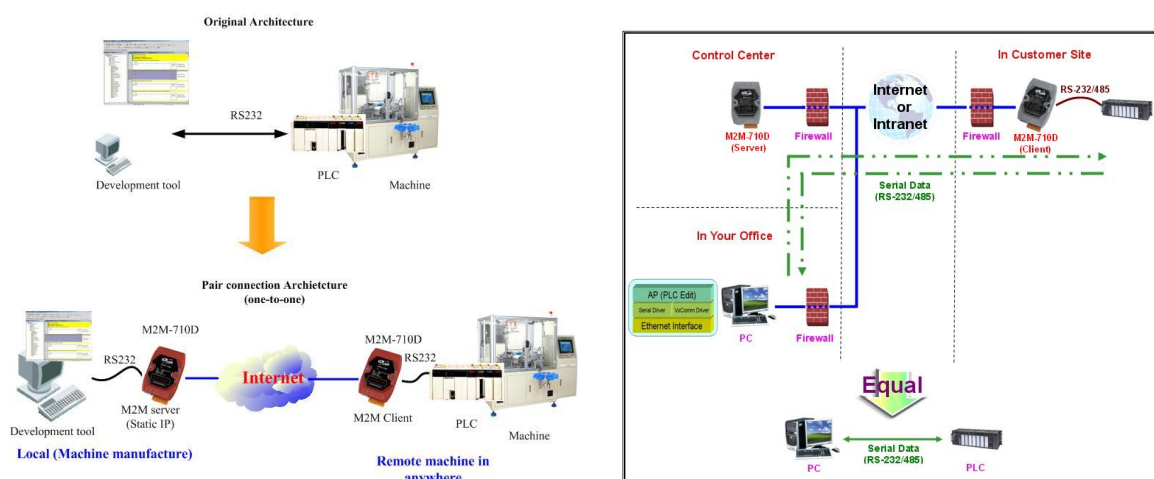
Pin Assignments



Hardware Specifications

| Item | M2M-710D |
|-------------------|--|
| CPU | 80186-80 MHz or compatible |
| Flash | Flash ROM: 512 KB ; Erase unit is one sector (64 KB) ; 100,000 erase/write cycles |
| SDRAM | 64M Bytes |
| SRAM | 16 KB; Data retention: 40 years; 1,000,000 erase/write cycles. |
| Ethernet | 10/100 Base-Tx, RJ-45 port (Auto-negotiating, auto MDI/MDI-X, LED indicator) |
| COM port | COM1: RS-232 interface -- D-sub5-write male RS-232: Rx/D, Tx/D, RTS, CTS, DTR, DSR, GND COM2: RS-485 interface -- 2-pin screw terminal block RS-485: RS-485(DATA+, DATA-), self-tuner ASIC inside Baud Rate : 1200/2400/4800/9600/19200/38400/57600/115200 bps Data Format: 7/8 data bits, None/Odd/Even parity bit, 1/2 stop bit |
| Power Requirement | 10V ~ 30V |
| Power Consumption | 2.5W |
| Operating Temp. | -20°C ~ +60°C |
| Storage Temp. | -25°C ~ +85°C |
| Dimensions | 123 mm x 72 mm x 33 mm |

Application



Ordering Information

M2M-710D

Remote Maintenance with serial streaming Solution