


I-87069W
I-87069PW

8-channel PhotoMOS Relay Output Module

Introduction

Both the I-87069W and the I-87069PW features eight Form A PhotoMOS relay output channels. In comparison to electromechanical relays, the PhotoMOS relays provide a faster response time, greater electrical endurance, higher vibration and shock resistance. There are also no arcing, no bounce, and no switching noise for the PhotoMOS relay. There are options for configuring power-on and safe digital output values, and both the I-87069W and the I-87069PW each include eight LED indicators that are used to display channel status as well as providing 4 kV ESD protection.

I/O Specifications

Models	I-87069W	I-87069PW
PhotoMOS Relay Output		
Output Channels	8	
Relay Type	PhotoMOS Relay, Form A	
Operating Load Voltage Range	350 V (AC peak or DC)	80 V (AC peak or DC)
Continuous Load Current	0.13 A	1 A
Peak Load Current	0.4 A	3 A
Output Off State Leakage Current	1 μ A	
Operating Time	2 ms (Max.)	5 ms (Max.)
Release Time	1 ms (Max.)	0.5 ms (Max.)
Electrical Endurance	Long Life and No Spike	
Power-on Value	Yes, Programmable	
Safe Value	Yes, Programmable	

PhotoMOS Relay Output

Features

- 8 PhotoMos Relay Outputs
- 4 kV ESD Protection
- No Arcing, No Bounce, and No Switching Noise
- Photocouple Isolation
- Embedded Dual Watchdog
- Configurable Power-on Value Settings
- Configurable Safe Value Settings
- Wide Operating Temperature Range: -25 ~ +75°C



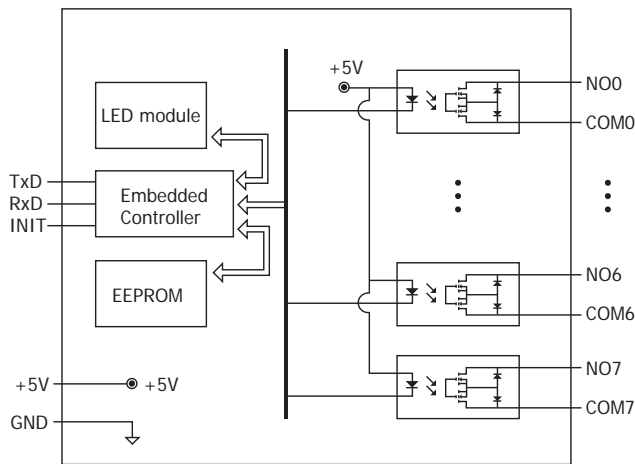
Applications

- All Types of On/Off Control
- Industrial Automation
- Industrial Machinery
- Building Automation
- Food and Beverage Systems
- Semiconductor Fabrication
- Control Systems

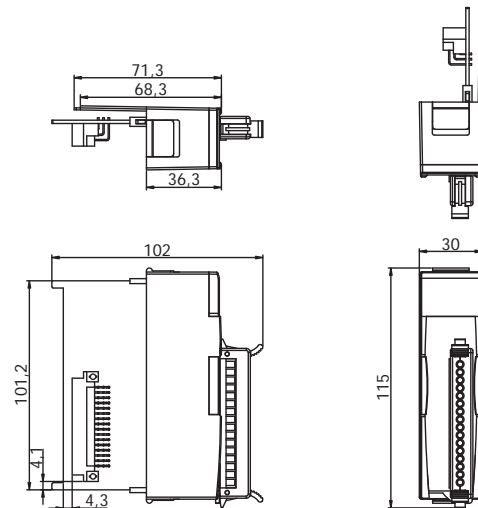
System Specifications

Models	I-87069W	I-87069PW
Communication		
Interface	RS-485	
Format	(N, 8, 1), (N, 8, 2), (O, 8, 1), (E, 8, 1)	
Baud Rate	1200 ~ 115200 bps	
Protocol	DCON	
Watchdog		
Dual Watchdog	Yes, Module (1.6 seconds), Communication (Programmable)	
LED Indicators		
	1 LED as Power Indicator	
	8 LEDs as PhotoMOS Output Indicators	
Isolation		
Intra-module Isolation, Field-to-Logic	5000 Vdc	2000 Vdc
EMS Protection		
ESD (IEC 61000-4-2)	\pm 4 kV Contact for Each Terminal \pm 8 kV Air for Random Point	
EFT (IEC 61000-4-4)	\pm 4 kV for Power	
Power		
Power Consumption	0.3 W (Max.)	
Environment		
Operating Temperature	-25 ~ +75°C	
Storage Temperature	-30 ~ +75°C	
Humidity	10 ~ 95% RH, Non-condensing	
Dimensions	30 mm x 102 mm x 115 mm (W x L x H)	

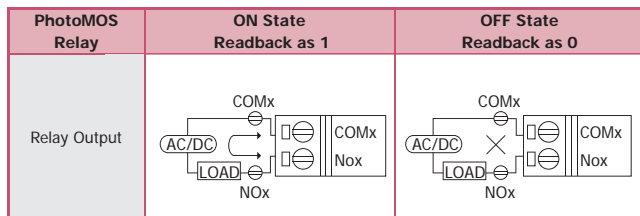
Internal I/O Structure



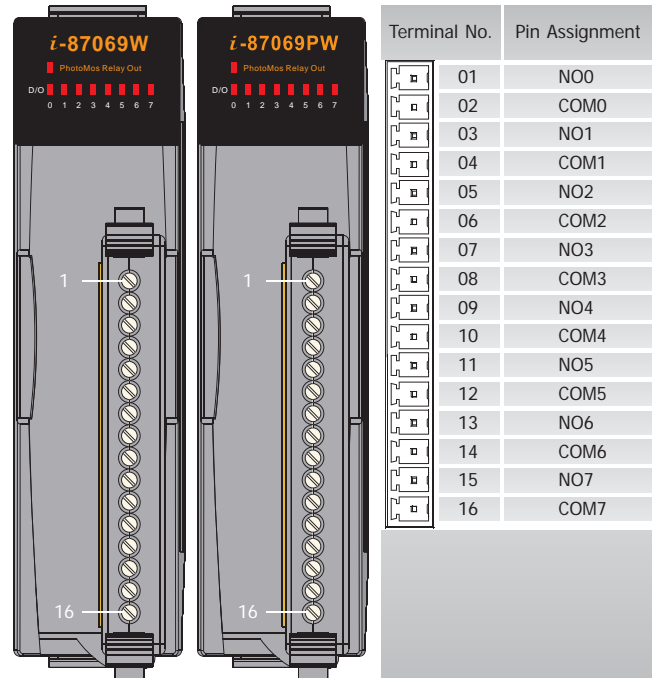
Dimensions (Units: mm)



Wire Connections



Pin Assignments



Ordering Information

I-87069W-G CR	8-channel PhotoMOS Relay Output Module (RoHS)
I-87069PW-G CR	8-channel PhotoMOS Relay Output Module (RoHS)

Related Products

Converters	USB, RS-232, Fiber Optical to RS-485 Converters and Repeaters
Power Supply	24 V _{DC} Power Supply
Relay Module	External Relay Modules for 87k DO Modules
Learning Kit	Beginner Learning Kit
Application Books	Application Books Designed for Our Products
Data Logger Software	User-friendly Data Logger Software (free)