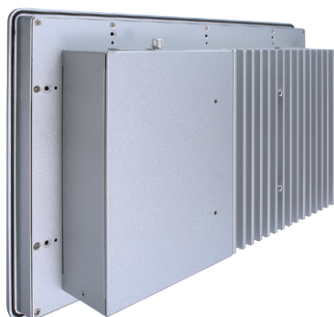


GOT318W-521 NEW

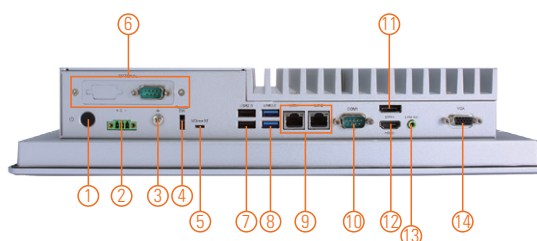
18.5" FHD TFT Multi-touch Panel Computer with LGA1151 9th/8th Gen Intel® Core™ i7/i5/i3, Intel® Pentium® Processors Gold/Celeron® Processors (Tj 100°C , TDP 35W)

Features

- 18.5" FHD projected capacitive multi-touch or 5-wire resistive touch
- Fanless design with LGA1151 9th/8th gen Intel® Core™ i7/i5/i3, Intel® Pentium® processors Gold/Celeron® processors (Tj 100°C , TDP 35W)
- Supports WLAN module & antenna (optional)
- 2.5" SATA HDD/SSD
- 2 LAN, 4 USB, 2 COM, 1 HDMI, 1 DP and 1 VGA
- IP65-rated aluminum front bezel
- Supports panel mount and VESA mount and wall mount



▲ Rear view



- | | | |
|---------------------------------|--|--------------------------------|
| 1. Power button | 6. Optional flexible I/O
(default 1 x RS-232) | 10. 1 x COM for RS-232/422/485 |
| 2. Phoenix small type connector | 7. 2 x USB 2.0 | 11. 1 x DP |
| 3. Grounding hole | 8. 2 x USB 3.0 | 12. 1 x HDMI |
| 4. Remote power switch | 9. 2 x RJ-45 for Giga Ethernet | 13. 1 x Line-out |
| 5. AT/ATX switch | | 14. 1 x VGA |



Introduction

The GOT318W-521 is a fanless panel PC with 18.5-inch FHD LCD and supports LGA1151 9th/8th gen Intel® Core™ i7/i5/i3, Intel® Pentium® processors Gold/Celeron® processors (Tj 100°C , TDP 35W). It also provides M.2 Key E and mini-PCI Express slots for add-on devices such like Wi-Fi module for factory automation, and oil pipe monitoring system.

18.5-inch FHD LCD with PCT or Resistive Touch

The 18.5" FHD touch panel PC supports 500 nits brightness, able to display contents in FHD resolution. With projected capacitive multi-touch screen or 5-wire resistive touch, users can operate the device more directly and friendly. The touch glass surface is up to 3H for anti scratch purpose.

Specifications

Front Bezel	IP65 front bezel	
LCD Panel	Display Type	18.5" FHD TFT LCD
	Brightness (cd/m ²)	500 nits
	Resolution	1920 x 1080
Main System	CPU	LGA1151 9th/8th gen Intel® Core™ i7/i5/i3, Intel® Pentium® processors Gold/Celeron® processors (Tj 100°C, TDP 35W)
	Chipset	Intel® H310
	System Memory	1 x 260-pin DDR4-2666/2400 SO-DIMM, up to 32GB
	BIOS	AMI UEFI BIOS
	Storage	1 x mSATA 1 x 2.5" SATA HDD/SSD (7 mm and 9.5 mm, removable)
	Watchdog Timer	255 levels, 0 to 255 sec.
	Onboard Graphics	Intel® integrated Gfx graphic engine

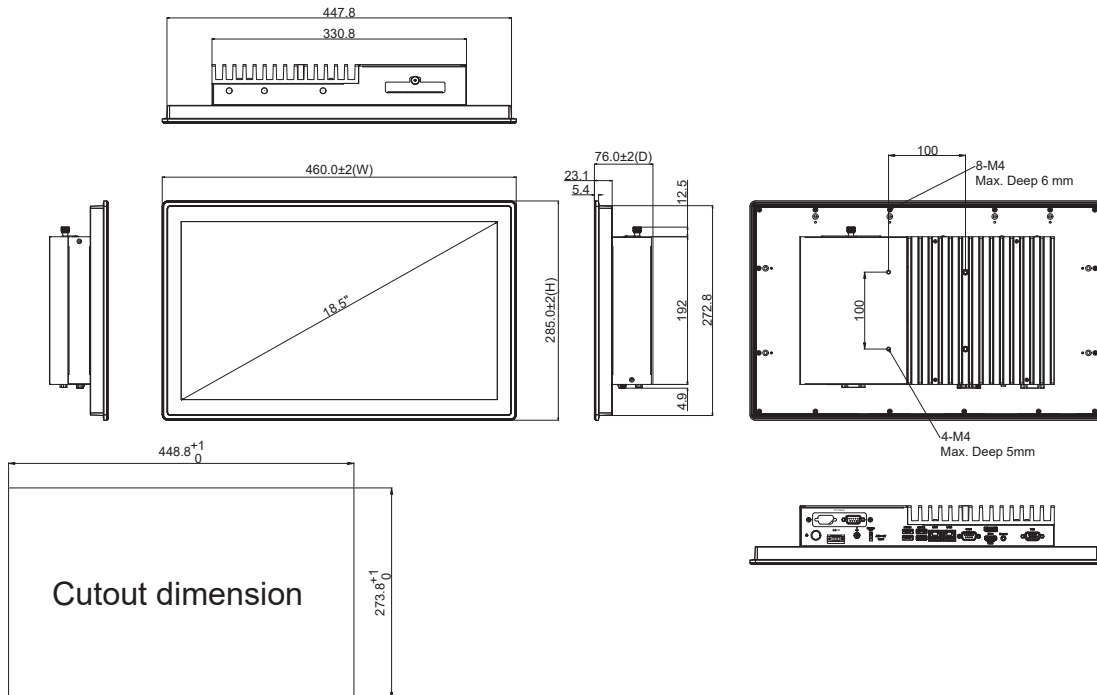
Specifications

I/O Connector	1 x 9-pin D-sub Male for RS-232 1 x COM for RS232/422/485 2 x RJ45 for Giga Ethernet 2 x USB 3.0, 2 x USB 2.0 1 x Phoenix type connector for DC power input 1 x Switch for power on/off (ATX) 1 x Line-out 1 x HDMI 1 x DP 1 x VGA 1 x Remote power switch 1 x AT/ATX switch (DC type only) 1 x Grounding hole (DC Version)
TPM	TPM 2.0
Expansion Interface	1 x Full-size PCI-Express Mini Card slot (PCIe + SATA + USB) 1 x M.2 Key E 2230 (for Wi-Fi)
Touchscreen	Projected capacitive multi-touch or 5-wire resistive touch
Power Supply	+12V/+19V/+24VDC 1x terminal block
Power Consumption	120W
Dimensions	460.8 mm (18.11") (W) x 77 mm (3.04") (D) x 285 mm (11.22") (H)
Packing Dimensions	605 mm (23.81") (W) x 200 mm (7.87") (D) x 505 mm (19.88") (H)
Weight (net/gross)	7.8kg (17.2lb)/10.2kg (22.5lb)
Operating Temperature	0°C to +50°C (+32°F to +122°F)
Relative Humidity	20% to 90% @ +40°C; non-condensing
Operation Vibration	1G, 10 - 500 Hz, random for 2.5" SATA HDD
Certifications	CE, EN 61000-6-2, EN 61000-6-4

Packing List

- 1 x GOT318WL-521
- 1 x Phoenix connector

Dimensions



Ordering Information

GOT318W-521-PCT-DC (P/N: E22B318104)	18.5" FHD TFT fanless touch panel computer support LGA1151 9th/8th gen Intel® Core™ i7/i5/i3, Intel® Pentium® processors Gold/Celeron® processors (Tj 100°C, TDP 35W), projected capacitive multi-touch screen and 24 VDC terminal block with small Phoenix connector
GOT318W-521-R-DC (P/N: E22B318105)	18.5" FHD TFT fanless touch panel computer supports LGA1151 9th/8th gen Intel® Core™ i7/i5/i3, Intel® Pentium® processors Gold/Celeron® processors (Tj 100°C, TDP 35W), 5-wire resistive touch screen and 24 VDC terminal block with small Phoenix connector

- * Other configuration by request
- * Specification and certifications may vary based on different requirements

Optional Accessories

4G LTE Kit	
Wi-Fi kit	
881231770A0E	Wall mount kit
882B31800A0E	Panel mount kit
50906D24000E	Adaptor 24V/120W, wire only, FSP120-AAAN3
594K6220210E	Remote power cable, L= 720 mm

Optional EOS Installation

Windows® 10 IoT Enterprise

Optional OS Installation

Windows® 10