

Getac

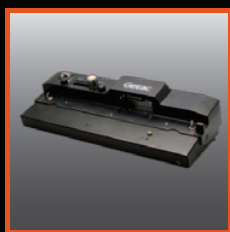
Rugged Mobile Computing Solutions

B300

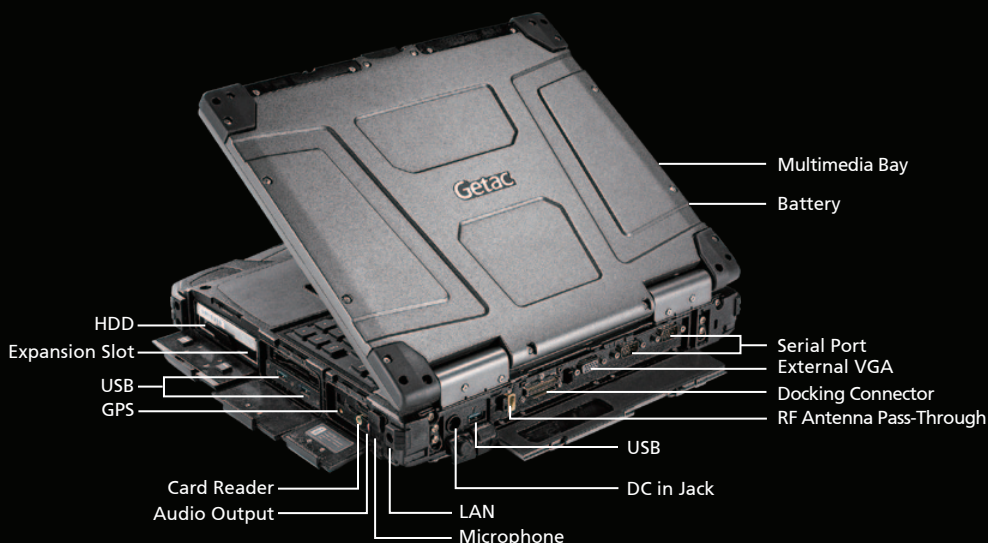
Fully Rugged Notebook



- 6th Generation Intel® Core™ i7 / i5 vPro™ Processor
- 13.3 " Getac QuadraClear® Sunlight Readable Display up to 1400 Nits
- Up to 30 Hours of Battery Life with Dual Battery System
- Enhanced Enterprise Security with optional Intel vPro, Windows Disk Encryption, TPM 2.0 and many more multi-factor authentication options
- Extreme ruggedness with 4ft operating drop rating, vibration and sand resistant and operating temperatures of -29°C ~ 60°C (-20°F ~ 140°F)



Office Dock



Rugged Mobile Computing Solutions



Specifications

Operating System	Windows® 7 Professional Windows® 10 Professional
Mobile Computing Platform	Intel® Core™ i7 Technology Intel® Core™ i7-6500U Processor 2.5GHz Max. 3.1GHz with Intel® Turbo Boost Technology - 4MB Intel® Smart Cache Intel® Core™ i7 vPro™ Technology Option Intel® Core™ i7-6600U vPro™ Processor 2.6GHz Max. 3.4GHz with Intel® Turbo Boost Technology - 4MB Intel® Smart Cache Intel® Core™ i5 Technology Intel® Core™ i5-6200U Processor 2.3GHz Max. 2.8GHz with Intel® Turbo Boost Technology - 3MB Intel® Smart Cache Intel® Core™ i5 vPro™ Technology Optional Intel® Core™ i5-6300U vPro™ Processor 2.4GHz Max. 3.0GHz with Intel® Turbo Boost Technology - 3MB Intel® Smart Cache
VGA Controller	Intel® HD Graphics 520 ⁱ
Display	13.3" TFT LCD XGA (1024 x 768) 700 nits display Optional 1400 nits QuadraClear® sunlight readable display with touchscreen
Storage & Memory	Optional SATA HDD 1TB SATA HDD 500GB Optional SATA SSD 128GB / 256 GB / 512GB / 1TB
Keyboard	LED backlit membrane keyboard Optional LED backlit rubber keyboard
Pointing Device	Touchscreen - Optional pressure sensitive touchscreen Touchpad - Glide touchpad with scroll bar
Expansion Slot	PCMCIA Type II x 1 + ExpressCard/54 x 1 SD card reader x 1
Multimedia Bay	DVD super multi drive Optional 2nd battery Optional 2nd storage: HDD 500 GB / 1 TB ; SSD 128 / 256 / 512GB
I/O Interface	Serial port (9-pin; D-sub) x 2 External VGA (15-pin; D-sub) x 1 Microphone (Mini-jack) x 1 Audio output (Mini-jack) x 1 DC in Jack x 1 USB 3.0 (9-pin) x 3 LAN (RJ45) x 1 HDMI x 1 External GPS antenna port (only with optional GPS) x 1 Docking connector (80-pin) x 1 Optional RF antenna pass-through for GPS and WWAN

Communication Interface	10/100/1000 base-T Ethernet Intel® Dual Band Wireless-AC 8260, 802.11ac Bluetooth (v4.2) ⁱⁱ Optional dedicated GPS
Software	Getac Utility Adobe® Reader®
Security Feature	Intel® vPro™ Technology TPM 2.0 Fingerprint scanner Smart card reader (only with DVD Super Multi Drive) Kensington lock
Power	AC adapter (90W, 100-240VAC, 50 / 60Hz) Li-Ion smart battery (10.8V, 8700mAh) (up to 15 hours of battery life) ⁱⁱⁱ Optional Multimedia Bay 2nd Li-Ion smart battery (10.8V, 8700mAh)
Dimension (W x D x H) & Weight	303.5 x 263 x 60 mm (11.9" x 10.35" x 2.36"), 3.5 kg (7.7 lbs) ^{iv}
Rugged Feature	MIL-STD-810G certified and IP65 certified MIL-STD-461F certified ^v Optional ANSI/ISA 12.12.01 Full magnesium alloy case Shock-protected removable HDD Vibration & drop resistant Optional salt fog compliance Optional night vision
Environmental Specification	Temperature ^{vi} : - Operating: -29°C to 60°C / -20°F to 140°F - Storage: -40°C to 71°C / -40°F to 160°F Humidity: - 95% RH , non-condensing
Optional Accessories	Carry bag Battery charger (Two Bay) Multi-Bay Charger (Eight Bay) Vehicle adapter (90W, 11-16VDC and 22-32VDC) MIL-STD-461F certified AC adapter (90W, 100-240VAC) Multimedia bay 2nd battery (10.8V, 8700mAh) Multimedia bay 2nd HDD Stylus and tether Protection film Main battery (10.8V, 8700mAh) AC adapter (90W, 100-240VAC) Vehicle dock Office dock

Docking Solutions

	Serial Port	External VGA	Microphone	Audio Output	DC in Jack	USB	LAN	HDMI	RF Antenna Connector (GPS, WWAN, WLAN)
Vehicle Dock	2	1	1	1	1	4	1	--	2 (optional)
Office Dock	2	1	1	1	1	4	1	--	--

ⁱ Share memory size may vary by different operating system and RAM size.

ⁱⁱ Bluetooth performance and connectable distance may be subject to interference with the environments and performance on client devices, users may be able to reduce effects of interference by minimizing the number of active Bluetooth wireless devices that is operating in the area.

ⁱⁱⁱ Battery life testing conducted under MobileMark 2007. Battery performance will vary upon software applications, wireless settings, power management settings, LCD brightness, customized modules and environmental conditions. The battery has a limited number of charge cycles and may eventually need to be replaced by a Getac service provider. Battery life and charge cycles vary by use and settings.

^{iv} Weight varies from configurations and optional accessories.

^v MIL-STD-461F 90W AC adapter sold separately.

^{vi} Tested by a national independent third party test lab following MIL-STD-810G.

